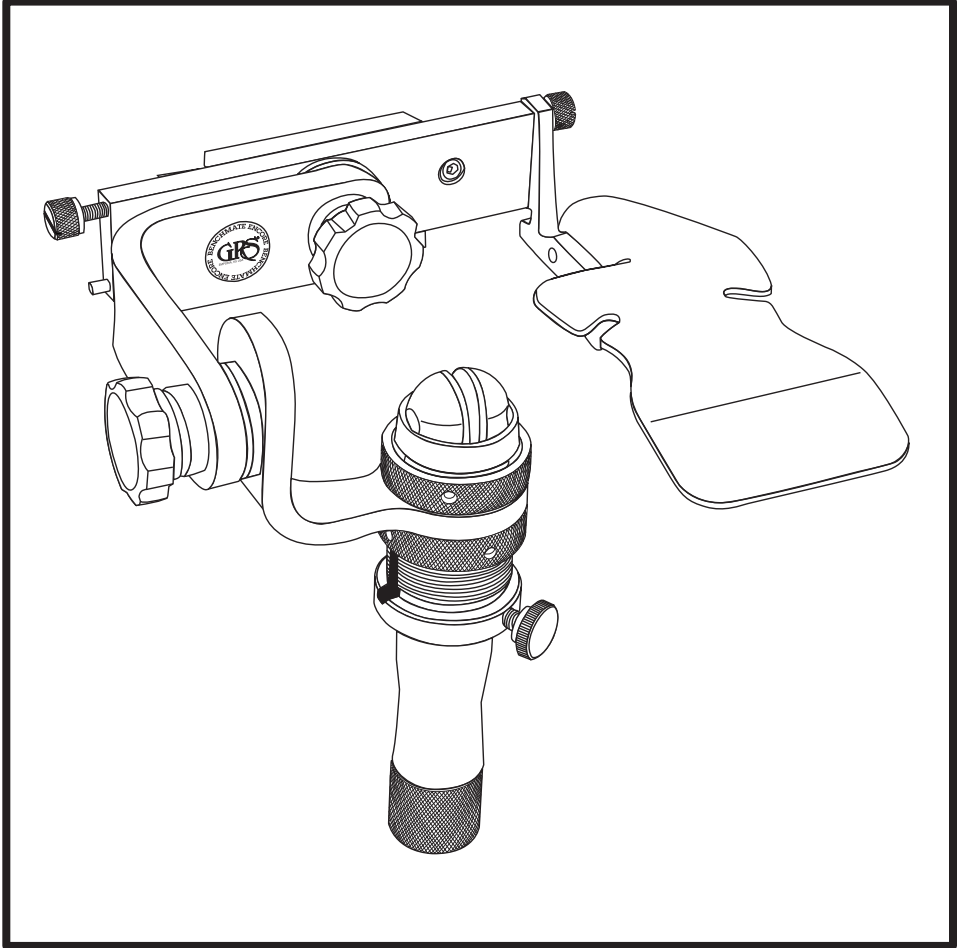




BenchMate® QCX

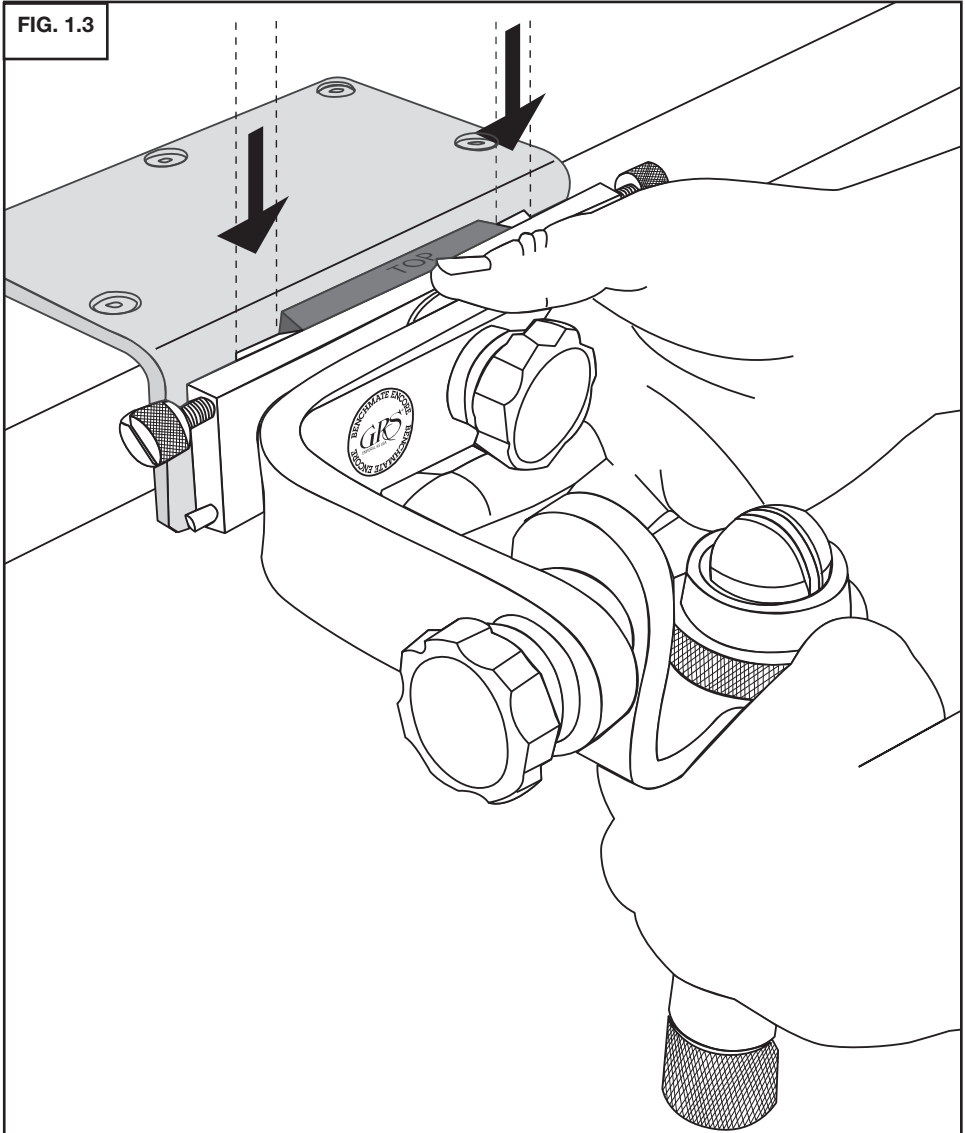
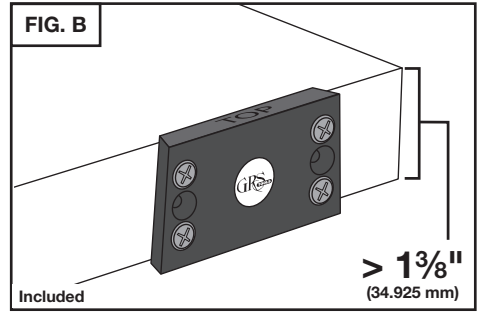
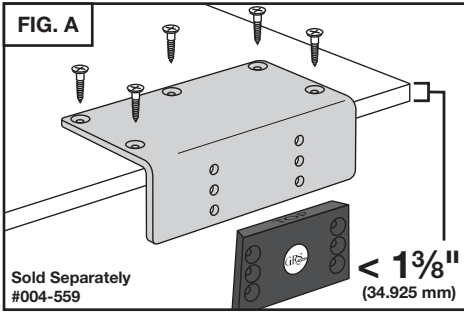
INSTRUCTIONS • #004-831 and #004-832



CONTENTS

1. INSTALLATION	2
2. HEIGHT ADJUSTMENTS	3
3. CHANGING QC FIXTURES	4
4. INSTALLATION OF THE HANDREST.....	4
5. INSTALLATION OF THE THIRD-HAND ATTACHMENT	5
6. MAINTENANCE	5
PARTS LIST • #004-831 AND #004-832	6
PARTS LIST • #004-832	8

1. INSTALLATION



2. HEIGHT ADJUSTMENTS

MANDREL HEIGHT



Spanner Wrench

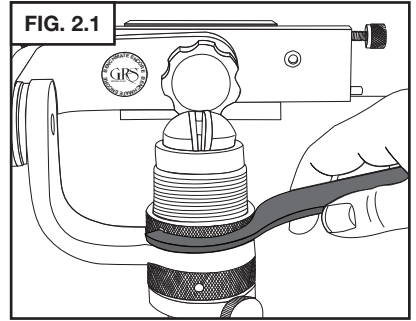


FIG. 2.1

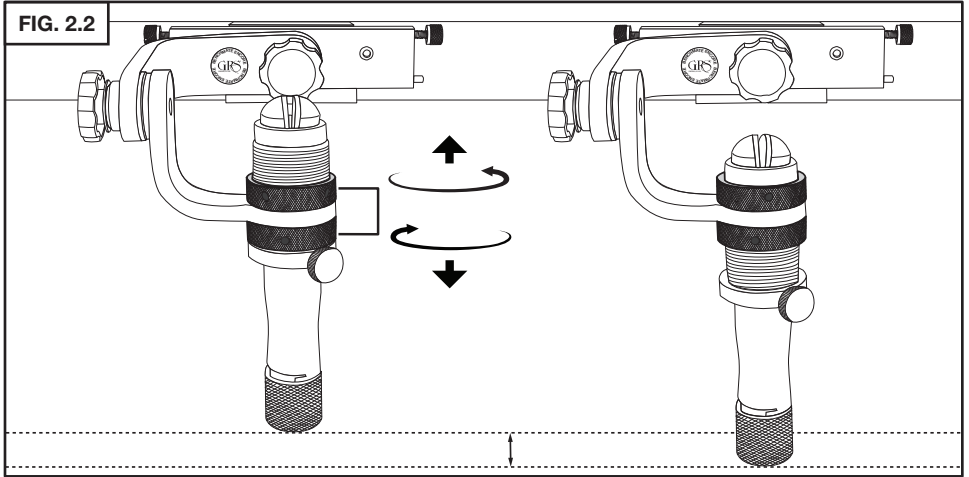
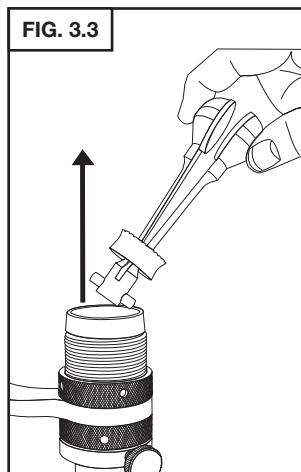
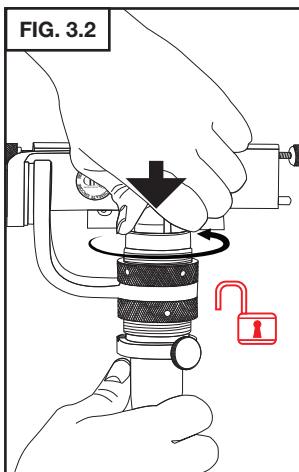
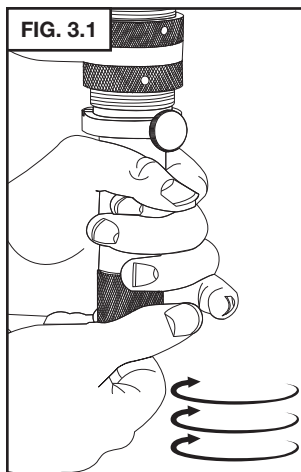


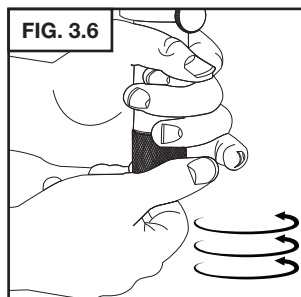
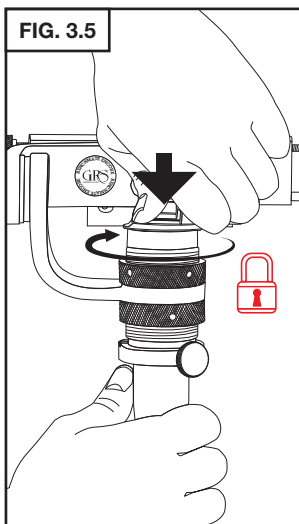
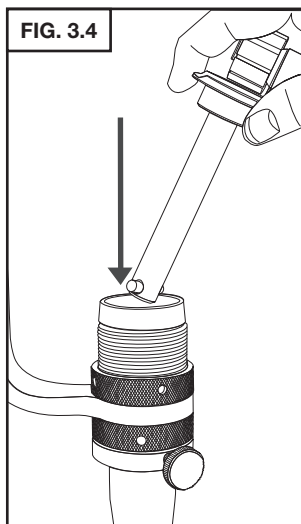
FIG. 2.2


3. CHANGING QC FIXTURES

FIXTURE REMOVAL

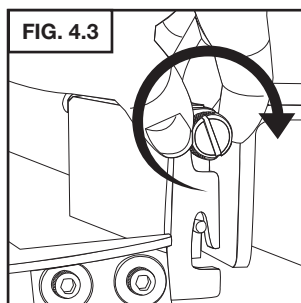
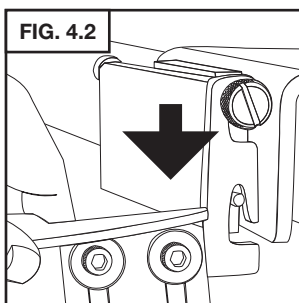
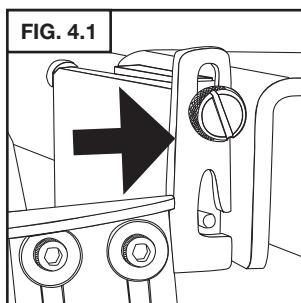


FIXTURE INSTALLATION

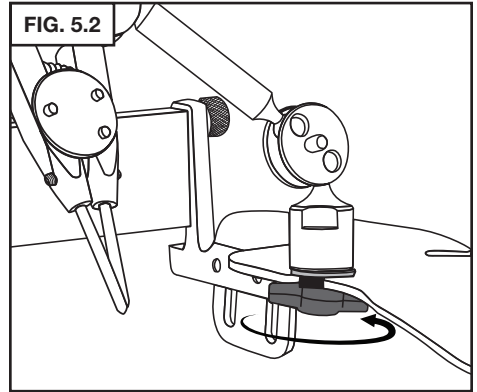
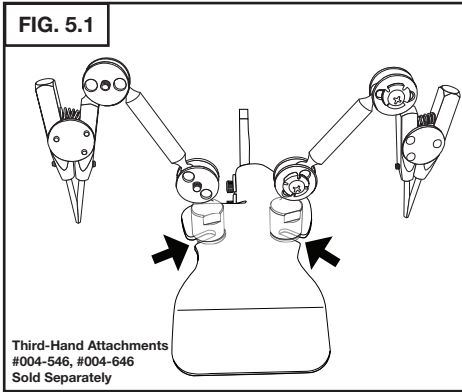


 **WARNING**
Make sure QuickChange fixture is seated fully before tightening with mandrel knob. A fixture can be ejected with force if not properly seated when tightening.

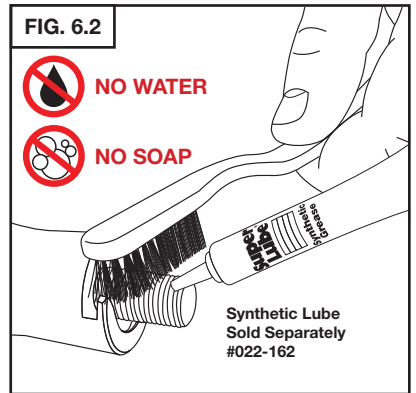
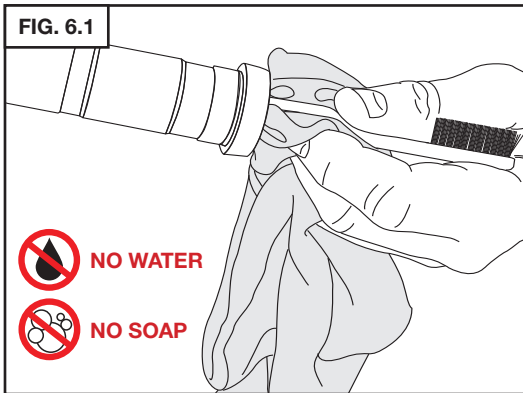
4. INSTALLATION OF THE HANDREST



5. INSTALLATION OF THE THIRD-HAND ATTACHMENT



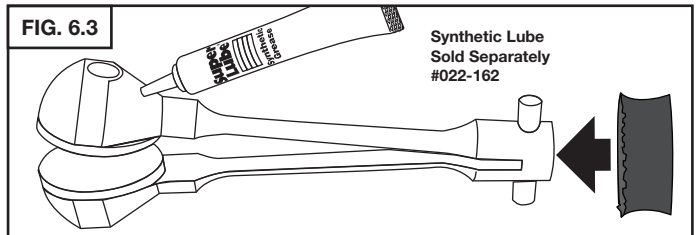
6. MAINTENANCE



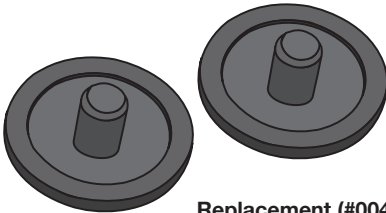
FOAM SEAL



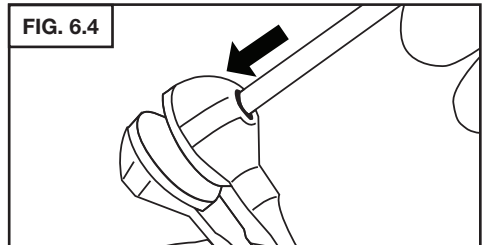
Replacement #004-126



PLASTIC INSERTS



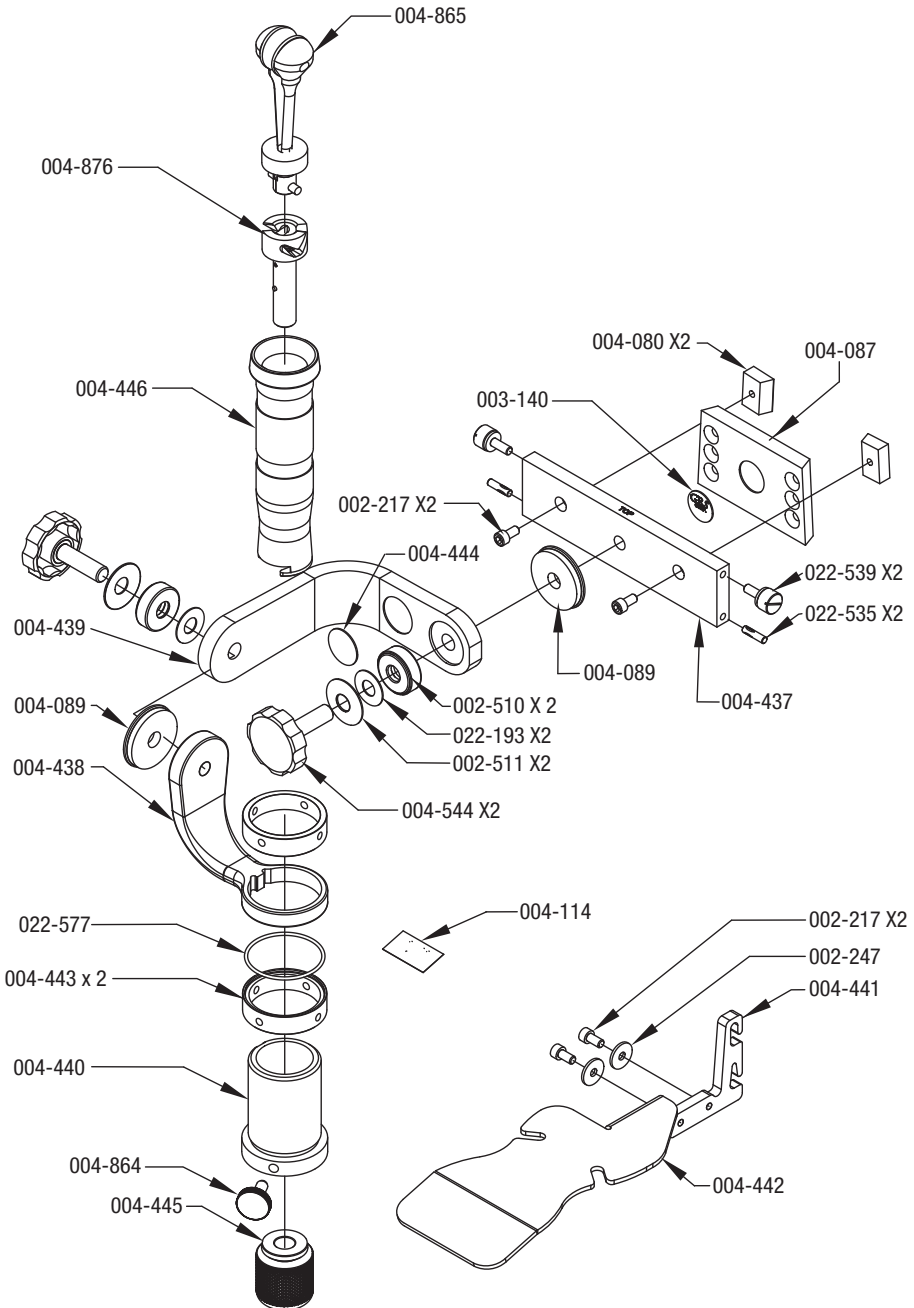
Replacement (#004-090 or
#004-558 pkg. of 10)



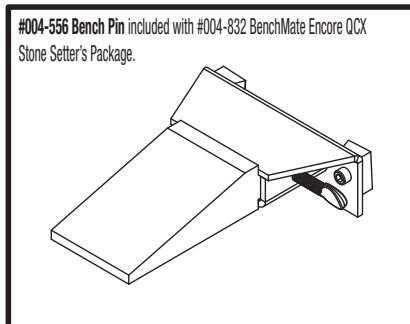
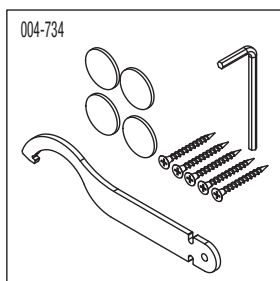


BenchMate® QCX

PARTS LIST • #004-831 and #004-832



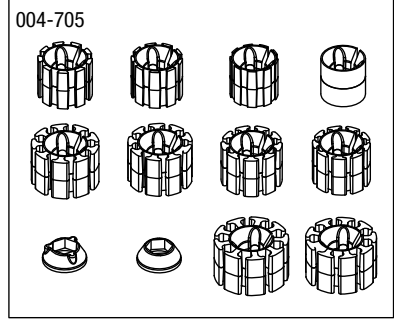
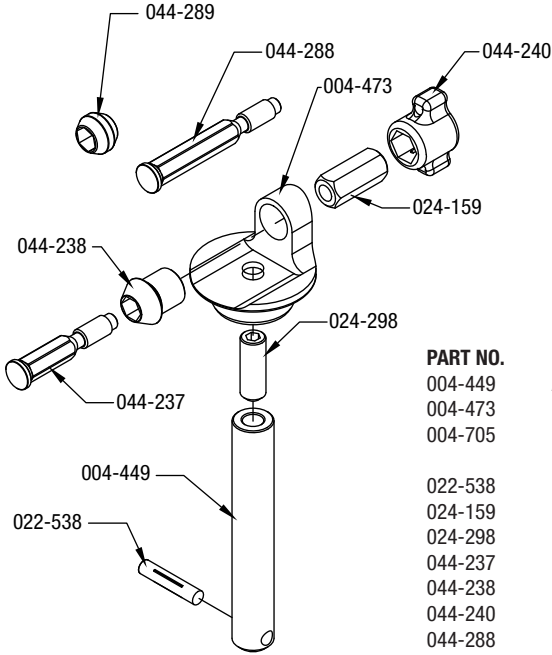
PART NO.	DESCRIPTION	QTY
002-217	#10-32 X 3/8 SHCS BLK	4
002-247	WASHER .191 X .628 X 16 GA	2
002-510	BEARING, THRUST	2
002-511	SPRING, DISC	2
003-140	LABEL, GRS	1
004-080	BEVELED RETAINING BLOCK	2
004-087	MOUNTING PLATE (BEVELED)	1
004-089	WASHER, FLAT FRICTION	2
004-114	LABEL, BENCHMARK	1
004-437	MOUNTING PLATE	1
004-438	LOWER ARM FOR MICROSCOPE CENTERING BENCH MATE FRAME	1
004-439	UPPER ARM	1
004-440	THREADED COLLAR	1
004-441	HAND REST MOUNT (MACHINED)	1
004-442	HAND REST	1
004-443	KNURLED LOCK RING	2
004-444	(NEW) BENCHMARK I.D. DECAL	1
004-445	CLAMP KNOB	1
004-446	CLAMP TUBE	1
004-544	KNOB ASSY 3/8-24	2
004-734	ACCESSORY PACK ENCORE 2 AXIS	1
004-864	NYLON TIPPED THUMB SCREW ASSY	1
004-865	COMPLETE QUICK CHANGE JAW ASSEMBLY	1
004-876	ENCORE QC TOOL RECEIVER SUB ASSEMBLY	1
022-193	WASHER	2
022-535	DRIV-LOC PIN .156 X .625 TYPE H	2
022-539	THUMB SCREW	2
022-577	O-RING 1 5/8 X 1 3/4 X 1/16	1



GRS® BenchMate® QCX

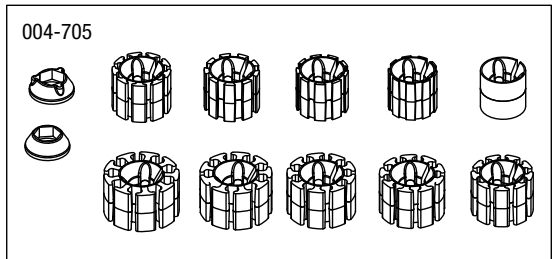
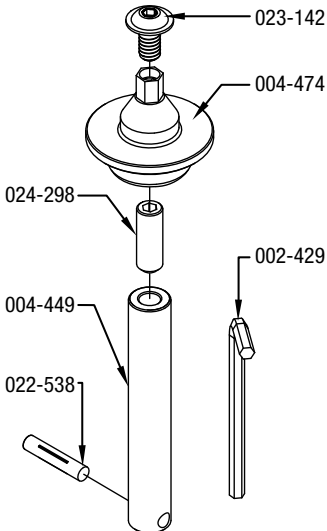
PARTS LIST • #004-832

#004-877 HORIZONTAL I.D. RING HOLDER INCLUDED WITH #004-832 STONE SETTER'S PACKAGE



PART NO.	DESCRIPTION	QTY
004-449	ACCESSORY MOUNT	1
004-473	INSIDE RING HOLDER HORZ STD HEIGHT	1
004-705	SET OF 10 MOLDED ID MANDRELS WITH 2 EXPANSION CONES BAGGED	1
022-538	DRIVE LOC PIN	1
024-159	1/4-28 X 7/8LG Z/P COUPLER NUT 3/8 HEX	1
024-298	5/16-18 SOCKET HEAD SET SCREW X 7/8	1
044-237	DRAWBAR FOR NEW STYLE ID RING HOLDER	1
044-238	FRAME MOUNTED MANDREL EXPANSION CONE	1
044-240	DRAW BAR KNOB FOR ID RING HOLDER	1
044-288	DRAWBAR FOR STACKED MANDRELS	1
044-289	CENTER CONE FOR STACKED MANDRELS	1

#004-878 VERTICAL I.D. RING HOLDER INCLUDED WITH #004-832 STONE SETTER'S PACKAGE



PART NO.	DESCRIPTION	QTY
002-429	WRENCH, 5/32" ALLEN	1
004-449	ACCESSORY MOUNT	1
004-474	INSIDE RING HOLDER VERT STD HEIGHT	1
004-705	SET OF 10 MOLDED ID MANDRELS WITH 2 EXPANSION CONES BAGGED	1
022-538	DRIVE LOC PIN	1
023-142	FLANGED BUTTON HEAD CAP SCREW	1
024-298	5/16-18 SOCKET HEAD SET SCREW X 7/8	1

GLEND0 LLC

900 Overlander Road • Emporia, KS 66801 USA
 800-835-3519 • 620-343-1084 • Fax: 620-343-9640
 grs@grstools.com • www.grstools.com
 Last Update: 02/15/2024